



Multiple positions Downloading system For production End of Line



DLS.Eol is the most productive solution for the End of Line ECU firmware programming. DLS.Eol is a flexible system that allows great savings of time and ensures errors free downloading operations

MAIN FEATURES:

- ⦿ Low consumption supply, less than 400W
- ⦿ Multiple communication BUS
- ⦿ Multiple protocols support
- ⦿ Flexible ECU support, allow to manage up to four different ECUs on a single system
- ⦿ Multiple, parallel downloading for higher production rates
- ⦿ Communication through ECU connector
- ⦿ Error-proof operation with automatic file selection from product barcode label
- ⦿ Automatic barcode reading for operator's error-proof working

TECHNICAL SPECIFICATIONS

| Specification | Protocols | Interface |
|-------------------------|--|---|
| Digital I/O | 32 digital input 64 digital output | (8 input and 16 output for each ECU position) |
| Communication standards | ➤ CAN 2.0A (11-bit) ➤ CAN 2.0B (29-bit) ➤ ISO 14230-4 (KWP2000) ➤ ISO 14229 (UDS) ➤ KLine (ISO 9141) | |
| Power | Voltage : 230 V AC- 50 Hz Air supply : 4 bar | Power consumption : 400 W |
| Dimensions | WxHxD : 600 x 1700 x 900 mm | |

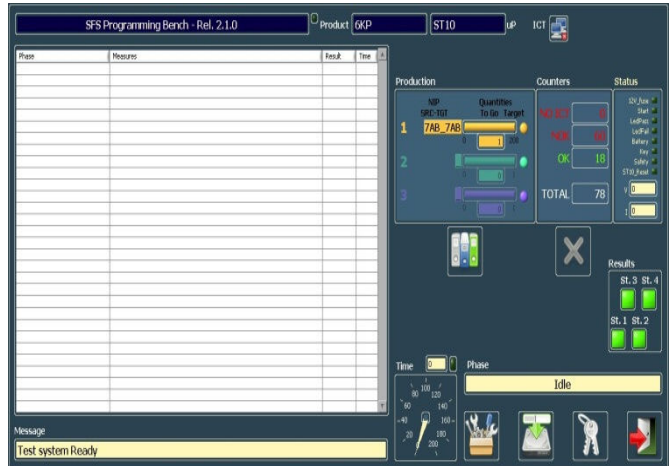


FLEXIBILITY AND MODULARITY

DLS.Eol is an advanced solution for “end-of-line” applicative software downloading for ECU, with the integration of several communication protocols.

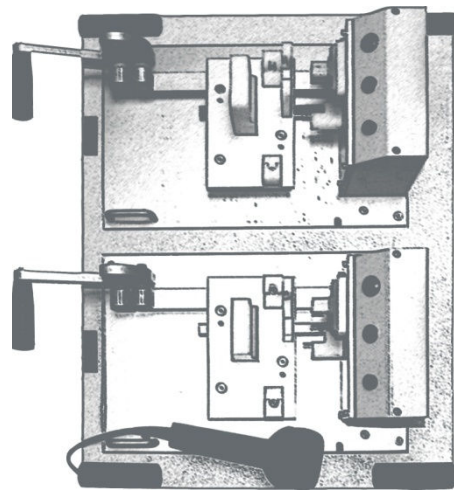
DLS.Eol can be scaled on customer needs to achieve the performance suitable for the application. Moreover with its reconfigurable and customizable test sequences, the system can support different product configurations.

DLS.Eol easy to operate interface and debug capabilities offers quick setup and trouble-shooting. In addition easy unlock and device release allows quick part under test changing to improve productivity.



APPLICATIONS

- ⊙ End Of Line ECU programming
- ⊙ Closed ECU programming with open and property owned communication algorithm
- ⊙ Special prototypes batch production
- ⊙ In-line production programming



CONFIGURATION AND OPTIONS

| Product code | I/O | CAN | K-line | Positions | Description |
|--------------|-----|-----|--------|-----------|---|
| DLS.Eol | X | X | X | 4 | Standard Downloading System for End-Of-Line operation, high productivity level, small plant footprint |
| DLS.Sfs | X | X | X | 1 | Software reprogramming station for open frame ECUs, high productivity, supervisor connection |
| DLS.One | X | X | X | 1 | Portable Downloading System, one position for small productions with the same quality assurance |
| DLS.Pro | X | X | X | 1 | NEW! Downloading System : Portable, multi platform, compact and scalable |