



Industrial programmer for KMA family devices



KMA.PG is a compact industrial solution for programming the NXP magneto-resistive sensors of KMA series.

KMA.PG is the ideal solution for any programming need both for production or laboratory environments.

MAIN FEATURES:

- ◉ Extended supply voltage 9-36Vdc protected by polarity inversion
- ◉ Plug-in device L=12TE for 19" 3U rack mount chassis
- ◉ Sense feedback on power supply lines
- ◉ Analog and SENT Output measurements
- ◉ Sensor's current consumption measurement
- ◉ Short circuit protection
- ◉ Floating ground with 1.5kV isolation
- ◉ PC connection through Ethernet TCP/IP communication

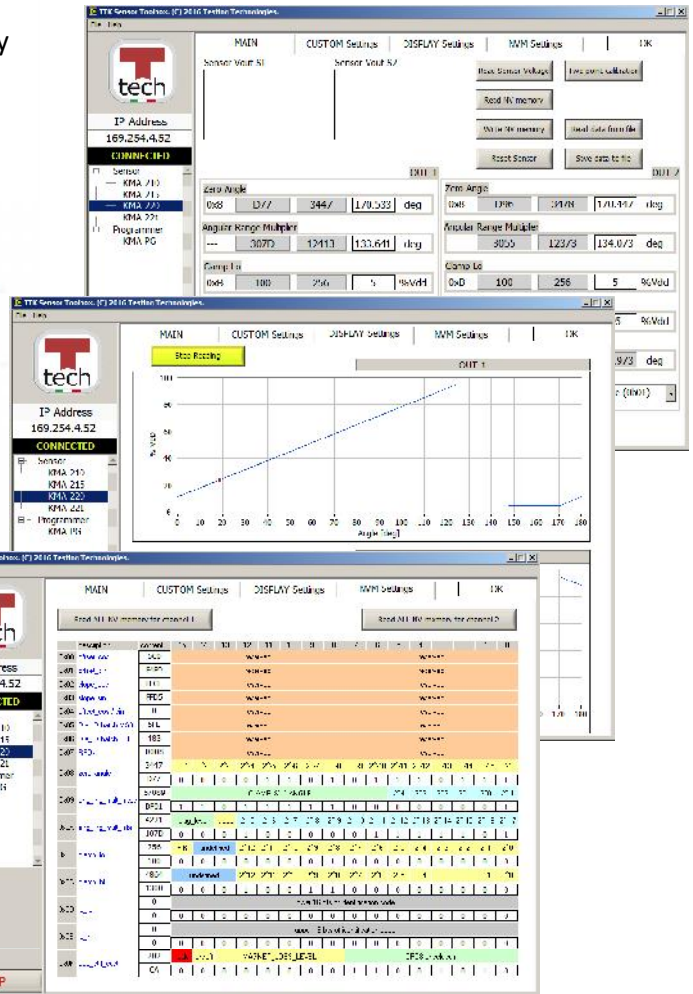
TECHNICAL SPECIFICATIONS

Specification	Details	Notes
Supported models	KMA210 KMA310 Z80 KMA215 KMA320 KMA220 KMA321 KMA221 KMA326	
Supply	9-36Vdc polarity independent	(170 mA consumption)
Sensor output	2 output with common supply and ground Sense on Power supply lines Short-circuit protection Floating GND	Up to 1.5kV isolation
IP	20	
Dimensions	WxHxD : 61 x 129 x 189 mm	3U – 12TE module for 19" chassis



SOFTWARE FEATURES

- Software Tool for KMA.PG, dll and LabVIEW™ libraries supplied with the programmer
- Ethernet TCP/IP communication with TTech proprietary communication protocol.
- The libraries are fully documented for application development
- No drivers needed for connecting the programmer
- Full control of the Sensor Memory
- Continuous reading of the Output Voltage
- Reading and decoding of SENT output
- SENT slow channel data decoding and visualization available on request with additional license
- Automatic Zero offset correction
- Integrated procedure for 2 points calibration
- Possibility to save and reload sensor's configuration files
- Free SW and FW upgrades



APPLICATIONS

- Laboratory and development systems
- Production programming systems
- Tool for resident, off-site technician

CONFIGURATION AND OPTIONS

Product code	Channels				Description
KMA.PG	2				Manage Sensors with up to 2 Channel Analog and SENT output